

Product lineup of VALCON and V CAMSHAFT



VALCON Pro



VALCON PLUS V CAM KIT Pro



VCAM SYSTEM

New lineup



VALCON II



CAMSHAFT(Variable valve timing type)



VCAM SYSTEM

- The software of valve timing controller "VALCON II" is released as freeware.
- Camshaft alone is available as an independent item.
- No component changes for "V CAM SYSTEM" for RB26/4G63. (The software is a freeware.)
- VALCON PLUS V CAM KIT will be discontinued. Please purchase each required part separately.

V CAMSHAFT

Camshaft for stock variable valve timing system.
It used to be sold as VALCON plus V CAM KIT Pro only. However, camshaft is sold as an independent item.

- Valve timing setting with VALCON II is recommended.
- With variable valve timing system, it is applicable from stock turbine to larger size replacement turbines.



The items in gray in the chat below are newly released this time.
Select an exhaust camshaft for the vehicle.

	INTAKE SIDE				Price	EXHAUST SIDE				Remarks
	Duration	Valve Lift	Valve Timing	Code No.		Duration	Valve Lift	Valve Timing	Code No.	
TOYOTA										
2JZ-GTE(VVT-i) JZA80, JZS161	264°	8.6mm	94° ~ 118°	22002-AT004		256°	8.7mm	115°	2202-RT082	
						264°	9.0mm	115°	2202-RT084	
						272°	9.3mm	115°	2202-RT086	
						280°	9.3mm	113°	22002-AT002	
1JZ-GTE(VVT-i) JZX100, JZX110	264°	8.6mm	75° ~ 119°	22002-AT003		256°	8.7mm	115°	2202-RT076	
						264°	9.0mm	115°	2202-RT078	
						272°	9.0mm	115°	2202-RT080	
NISSAN										
VQ35DE Z33	264°	10.5mm	90° ~ 130°	22002-AN018		264°	10.2mm	112°	22002-AN018	IN/EX SET 4 PCS SET
MITSUBISHI										
4B11 C24A (EVO X)	256°	10.0mm	85° ~ 110°	22002-AM010		248°	9.5mm	85° ~ 120°	22002-AM010	IN/EX SET 2 PCS SET
4G63 CT9A (EVO IX - IX MR)	272°	10.8mm	90° ~ 120°	22002-AM009		264°	10.2mm	110°	22002-AM002	
						272°	10.2mm	110°	22002-AM004	
						280°	10.2mm	110°	22002-AM008	
SUBARU										
EJ207 GDB (IMPREZA WRX STI A-G)	264°	9.1mm	85° ~ 130°	22002-AF006		264°	9.6mm	112°	22002-AF005	

VALCON II (Universal)

Universal VALCON II was released.

It can control even 4 camshafts variable valve timing system like GRB IMPREZA (EJ207) and BP/BL5 LEGACY (EJ20X/Y).

For light tuning vehicles, performance can be enhanced with installation of this product. (Data can be downloaded from the website.)

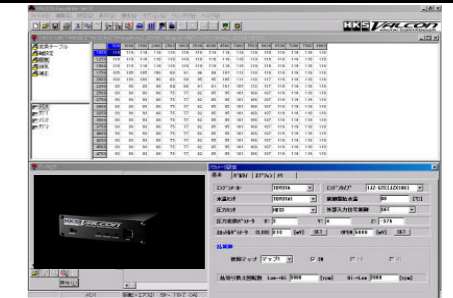
Use EasyWriter for further fine tuning.

● Functions

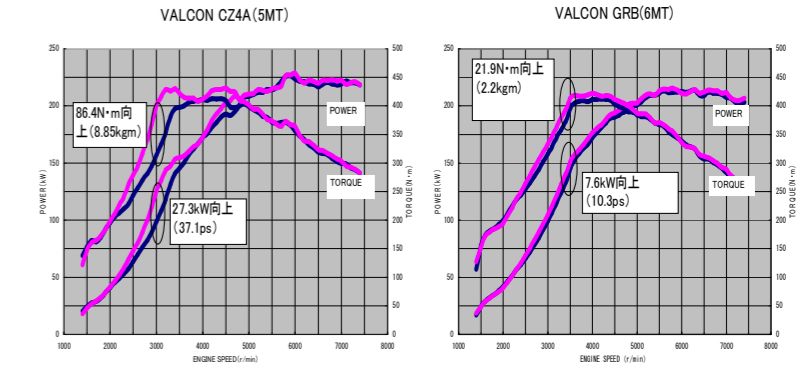
- Up to 4 camshafts can be controlled.
- Water temperature trim map
- Control start water temperature setting
- Engine rpm signal output function
- USB communication

● Features

- Valve timing control with 3 dimensions map.
- 4 LEDs and a push switch on the front panel.
- Adaptor and harness are required separately to install VALCON II.
- VALCON II Easy Writer/Vehicle specified data can be downloaded.



■ パワーグラフ



Product	Code No.	Price	Remarks
VALCON II Universal	45011-AK001		Universal unit. Download vehicle specified data file from the website.
VALCON II Universal Harness 1	45999-AK021		For vehicles that ECU is located in the cabin.
VALCON II Universal Harness 2	45999-AK022		For vehicles that ECU is located in the cabin and camshafts to be controlled are 3 or 4. (Universal Harness 1 is required separately.)
VALCON II Universal Harness 1L(2.5m)	45999-AK023		For vehicles that ECU is located in the engine compartment.
VALCON II Universal Harness 2L(2.5m)	45999-AK024		For vehicles that ECU is located in the engine compartment and camshafts to be controlled are 3 or 4.
VALCON II ADAPTER	45999-AK025		1 set is required to control 1 or 2 camshafts. 2 sets are required to control 3 or 4 camshafts.
VALCON II Harness MV2-1	45999-AM001		Harness for CT9A EVO IX.
VALCON II Harness FV2-1	45999-AF001		Harness for GRB, BP5/BL5(D-F).
VALCON II Harness FV2-2	45999-AF002		Harness for GDB.
VALCON II Harness FV2-3	45999-AF003		Harness for BP5/BL5(A-C).

● "Adaptor" and "Harness" are required separately to install VALCON II.

Select either vehicle specified harness or universal harness.

Vehicle	Model	Engine	Model Year	Adaptor	Harness					
					Quantity	Universal Harness 1	Universal Harness 2	Universal Harness 1L	Universal Harness 2L	Vehicle Specified Harness
TOYOTA										
ARISTO	JZS161	2JZ-GTE	97/8~02/8	1	-	-	●	-	-	Not available
SUPRA	JZA80	2JZ-GTE	9/8~02/8	1	●	-	-	-	-	Not available
MARK II, CHASER, CRESTA	JZX100	1JZ-GTE	96/9~00/9	1	●	-	-	-	-	Not available
MITSUBISHI										
LANCER EVOLUTION X	C24A	4B11	07/10~	1	-	-	●	-	-	Not available
LANCER EVOLUTION IX	CT9A	4G63	05/3~07/9	1	-	-	-	-	-	MV2-1
SUBARU										
IMPREZA WRX STI	GRB(A~)	EJ207	07/10~	2	●	●	-	-	-	FV2-1
LEGACY/ LEGACY TOURING WAGON	BP/BL5(D~F)	EJ20X/Y	06/5~	2	●	●	-	-	-	FV2-1

i.e.1) For Lancer Evo X --- Adaptor x 1 and Universal Harness x 1 are required.

i.e.2) For Impreza GRB --- Adaptor x 2 are required. For harness, Universal Harness 1 x 1, Universal Harness 2 x 1 or vehicle specified harness FV2-1 is required.

● About downloading of software and data

HKS website for EasyWriter

<http://www.hks-power.co.jp/easywriter/en/>

- Download software, manual and vehicle specified data for setting of VALCON II.
- The software is a freeware. Use a laptop PC for setting.

[VALCON Download]

- EasyWriter software
- VALCON II update program
- Vehicle specified data
- Manual of EasyWriter
1JZ/2JZ/4G63/4B11/EJ20
- Hardware manual of VALCON II

--- VALCON Software Download ---

- VALCON EasyWriter Ver1.02
- VALCON2 EasyWriter Ver1.02 Download
- VALCON2 Update Program
- VALCON2 EasyWriter Ver1.02 Manual
- VALCON2 Hardware Manual First Edition
- * It is recommended closing all applications during version up process.

--- Specified Car Model Download ---

Vehicle	Data File	Manual
TOYOTA		
JZX100 MARKII,CRESTA,CHASER	DATA FILE	MANUAL
JZA80 SUPRA 2JZ-GTE VVT-i	DATA FILE	MANUAL
JZS161 ARISTO & JZ-GTE VVT-i	DATA FILE	MANUAL
MITSUBISHI		
LANCER EVOLUTION IX	DATA FILE	MANUAL
LANCER EVOLUTION X	DATA FILE	MANUAL
SUBARU		
IMPREZA GDB	DATA FILE	MANUAL
IMPREZA GRB	DATA FILE	MANUAL
LEGACY BP5,BL5 (A~C)	DATA FILE	MANUAL
LEGACY BP5,BL5 (D~F)	DATA FILE	MANUAL