

Power Editor



INSTRUCTION MANUAL

Application: TOYOTA GR YARIS Gen2 [GXPA16]

E89671-T10040-00
August 2025
Ver. 3-1.01

1. INTRODUCTION

Thank you for your purchase of Power Editor R.

- This manual indicates items that require attention in order to install this product safely and lists precautions to avoid any possible damage and/or accidents.
- This product was designed based on installation onto a specific factory vehicle or a vehicle using other HKS products. The performance and/or safety cannot be guaranteed if this product was installed onto other inapplicable vehicles.
- Contact HKS dealer for any lost parts, replacement, and this manual.
- HKS will not be responsible for any damage caused by incorrect installation and/or use of this product.
- This product works only with a vehicle with DC12V negative ground.
- The specifications of this product are subject to be changed without notice.
- This manual is subject to be revised without notice.

| | |
|-------------|--|
| Product | Power Editor R GXPA16 Gen2 G16E |
| Code Number | 42018-AT024 |
| Use | Boost up of turbocharged vehicle |
| Application | TOYOTA GR YARIS Gen2 [GXPA16] 6MT/GR-DAT |

2. Safety Precaution

The following precautions for use of this product are to prevent possible accidents and/or injuries and for proper use.

⚠ WARNING : Indicates risk of serious injury and/or possible death.

⚠ CAUTION : Indicates risk of serious injury or property damage.

⚠ WARNING

- Make sure to work on the vehicle in a well-ventilated area to prevent possible explosion or a fire.
- Make sure to hold connectors when removing them to avoid possible damage to other electronics parts and/or a fire caused by disconnection or a short circuit.
- Stop using the product if any unusual situation is noticed. Consult the dealer immediately. Failure to do so may cause an electric shock, burn out, or damage to the vehicle.
- Make sure to work on the vehicle in area where a vehicle can be parked safely.

⚠ CAUTION

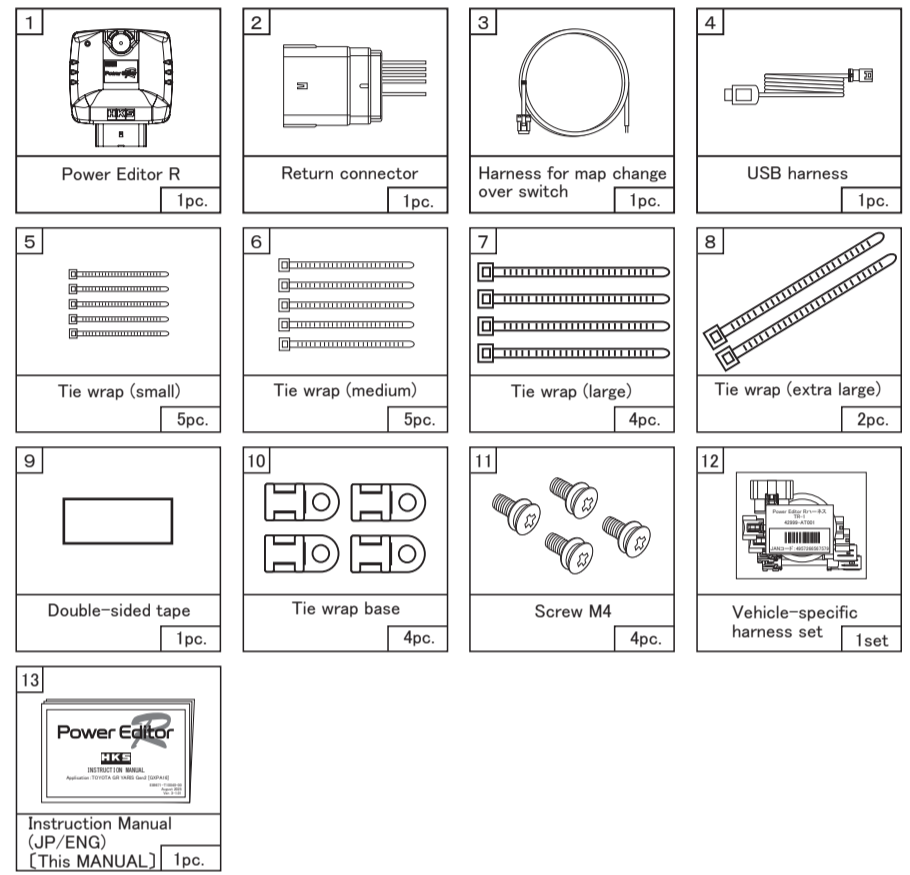
- Do not install this product by yourself.
- Do not modify, disassemble, and/or remodel the product and attached parts to avoid any damage to the unit and/or harness.
- To avoid possible malfunction and damage to the engine, install the unit away from excessive heat or water/moisture.
- Make sure all connections and wiring are not disconnected, short circuited, or incorrect. If so, it may cause an electric shock, burn out, or damage to the vehicle.
- If any unusual noise, scents, and/or vibrations are noticed, consult the dealer immediately.
- If any unusual noises, scents, and/or vibrations are noticed while driving, please refer to a factory repair manual.
- Confirm the following before reading the ECU data with this product:
 - The ECU is a factory standard.
 - Data on the ECU is not modified.
- Description of the connector, please go always hold the connector.
 - If you pull the cable, there is a possibility of disconnection.
- Before an automobile inspection and/or repair, it is necessary to remove this product.
- Daily maintenance on the vehicle is the responsibility of the owner.

3. Product Features

- By connecting this product between pressure sensor and manufacturer's original connector, boost can be easily raised.
- Even after installing this product, you can return to the normal state by connecting the "return connector" instead of the Power Editor R main unit.
- You can change the data for the boost up of the main unit by connecting to the personal computer with USB harness included in the product and using Easy Writer for Power Editor R.
Easy Writer for Power Editor R can be downloaded from the HKS homepage.
 - When connecting the USB harness, please remove the waterproof connector inserted into the harness by vehicle type.
 - After completing the settings and disconnecting the USB harness, connect the waterproof connector or map switch harness.



4. Parts List



5. Power Editor R LED display and map selection

[LED for operation confirmation]

Off: Power off

Lights up: Power ON (normal operation)

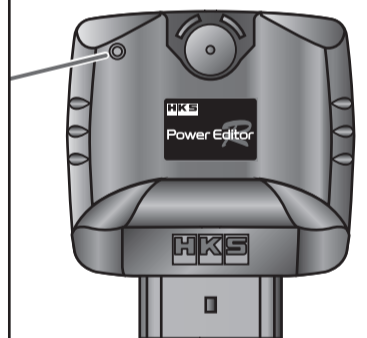
Blinking continuously: data is corrupted

(When it Blinking continuously, the boost will not increase and the operation will be the same as in the normal state.)

[When using the map changeover switch]

When switching to map A, the LED flashes once

When switching to map B, the LED flashes twice

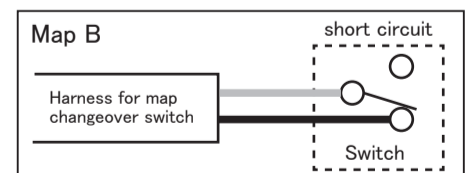
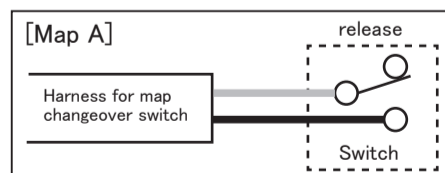


[About maps A and B]

- There are two maps, A and B, and you can switch between them using the changeover switch.
- If map B disabled, operation with the map switch will be disabled.
 - Map B is disabled in the factory default data for this product.
- If you want to use map B, use "Easy Writer for Power Editor R" and check the box as shown below to enable map B and enter the correction value.



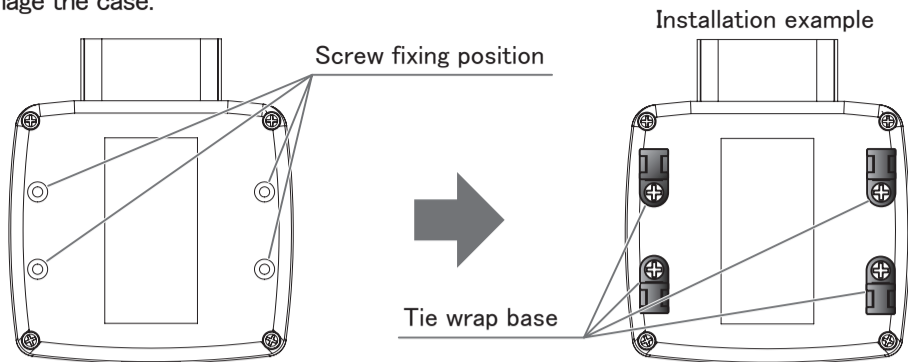
- Connect the harness for the map changeover switch and release the blue and black wires to switch to map A, short them to switch to map B.



- When using map B, a map changeover switch is required.
 - A map changeover switch is not included in the package, so please prepare one as needed.
- If the harness for map changeover switch is not used, map A will be selected. It is also possible to select the map by using the map A/B switching function of "Easy Writer for Power Editor R" without using the harness for the map switching switch.

6. When using a tie wrap base

- When using the tie wrap base, be sure to use the included screws M4.
If you use screws that are the wrong size, the tie wrap base may come off easily or damage the case.



7. Preparation of harness for each vehicle type and harness installation

- Please refer to the Harness Instruction Manual attached to harness by vehicle type.

8. Troubleshooting

If this product does not operate normally, check the wiring, etc. against the following symptoms before determining that it is malfunctioning.

If an abnormality occurs such as the check lamp lighting up, please remove the Power Editor R main unit and attach the included recovery connector.

| Symptoms | Cause | Measures |
|---|---|---|
| The check lamp lights up even when the return connector is used. | The connector is coming loose. | Re-insert each connector firmly until it locks. |
| | Harness is disconnected. Or the connector terminals have poor contact. | Request repair of Power Editor R. |
| The check lamp lights up only when the Power Editor R is connected. Or boost does not go up. | Power Editor R main unit is malfunctioning. | |
| | The written setting data does not match the vehicle. | |
| Power Editor R's LED is blinking. | Data writing failed with Easy Writer exclusive for Power Editor R. | Write data again using Easy Writer for Power Editor R. |
| Boost pressure only rises to the same level as stock. | The boost display in the genuine meter is off in the area where the intake manifold pressure sensor is corrected. | Check the boost pressure with an aftermarket boost gauge. |
| | The return connector is plugged in. | Connect the Power Editor R unit. |

9. Maintenance

⚠ WARNING

- Do not use this product if unusual occurrences should occur to avoid risk of electrical shock and/or fire. Consult with the dealer immediately.

⚠ CAUTION

- Do not try to repair the product yourself. Consult with your dealer.
- If any unusual noises, scents, and/or vibrations are noticed while driving, please refer to a factory repair manual.

10. Repair Service

For questions about this product, any optional, lost, defective and/or damaged parts, please contact your dealer.

11. Product Specifications

- Operating Voltage DC5V~16V
- Operating Temperature -20°C~100°C
- Outer Size 105×92×35mm

12. Revision of Manual

| Rev. Number | Date | Details |
|-------------|--------|-------------|
| 3-1.01 | 2025/8 | 1st Edition |
| | | |
| | | |
| | | |